

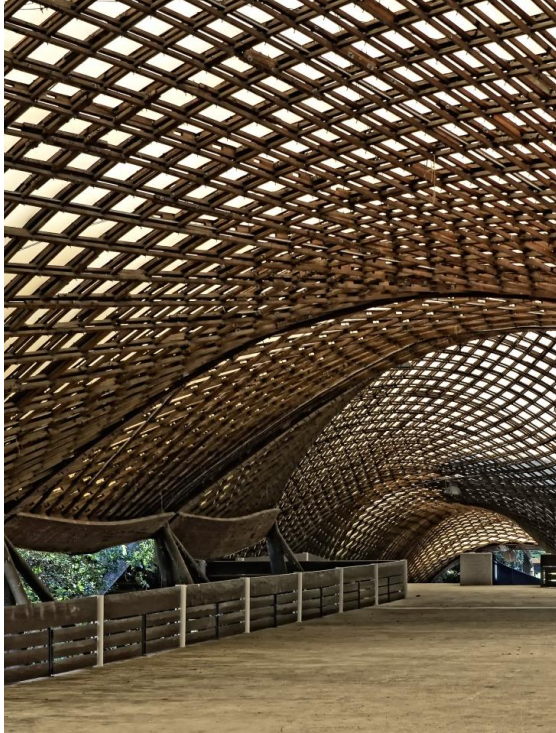
# GRIDSHELL

GROUP E

Ieva Virzonyte - Sarah Duhalde - Rocío Rivero Valero

# MATERIALS

## WOOD



Frei Otto, Germany

## STEEL



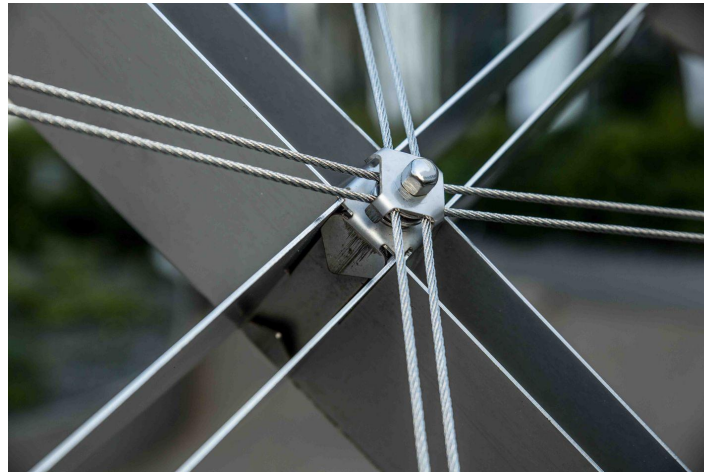
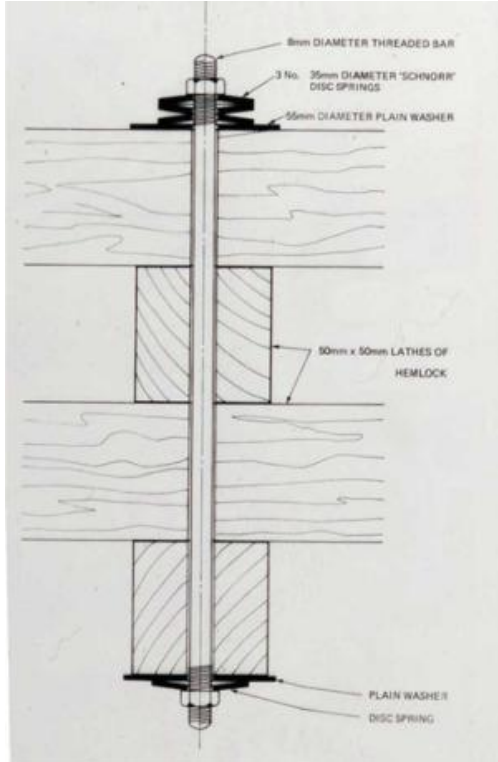
Massimiliano Fuksas, Italy

## Glass Fiber Reinforced Polymer



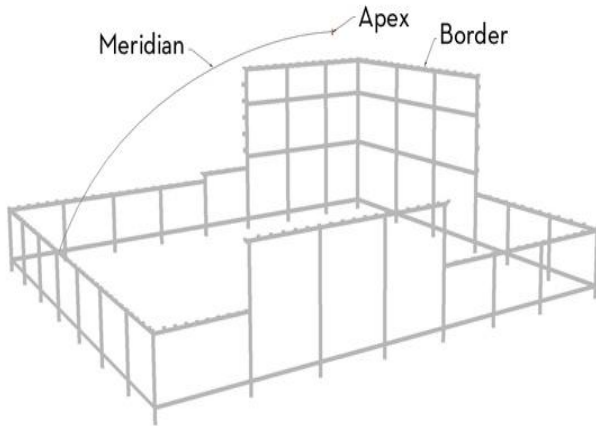
Experimental grid, France

# NODES AND CONNECTIONS

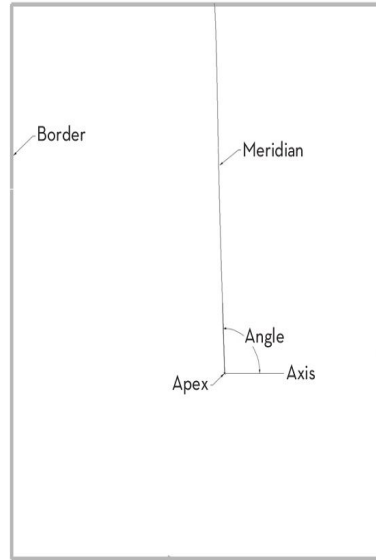


# PARAMETERS

Meridian and Height



Border and Angle



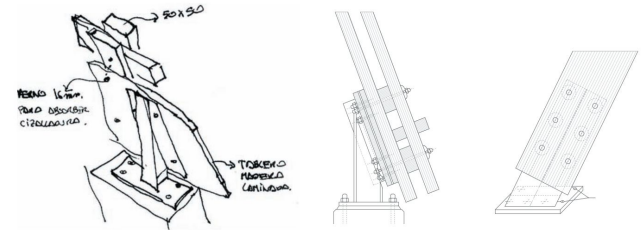
- BORDER
- APEX HIGH
- MERIDIAN
- ANGLE (on the plane over the selected meridians will be taken)



# DOUBLE CURVATURE STEEL LATTICE SHELL - Vladimir Shukhov (1897)



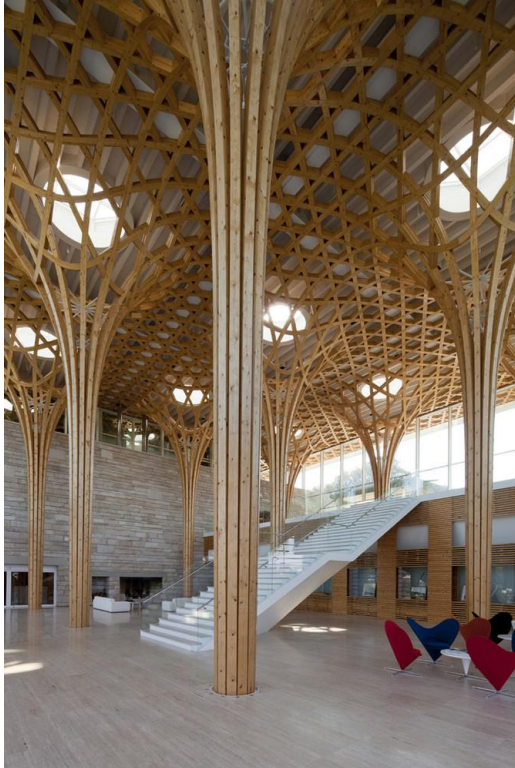
# MANNHEIM MULTIHALLE - Frei Otto (1975)



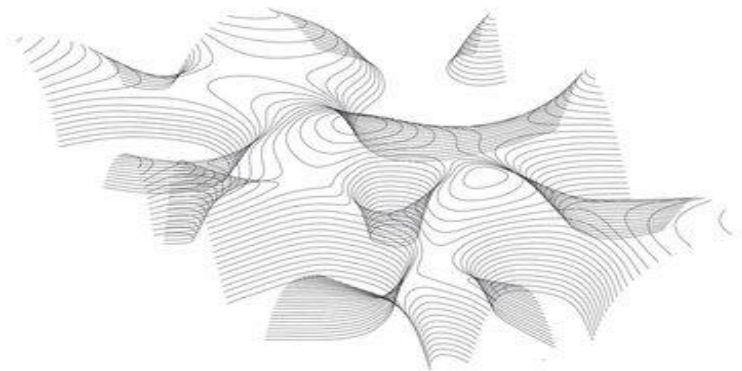
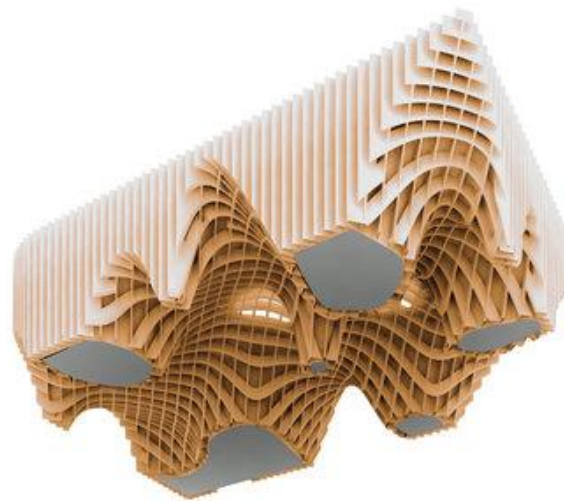


# NINE BRIDGE COUNTRY CLUB - Shigeru Ban (2009)

Wood gridshell - Hexagonal shape

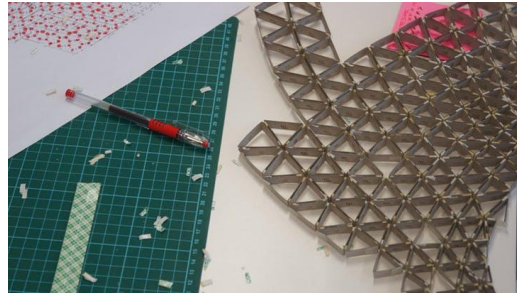


# FRENCH PAVILION - XTU agency (2015)





# SUDT LIBRARY PAVILLION - SUDT City Form Library (2013)



# JAPAN PAVILLION, EXPO 2000 - Frei Otto, Buro Happold, Shigeru Ban, SONOCO (2000)

